

SAMARTH EDUCATIONAL TRUST

**ARVIND GAVALI COLLEGE OF ENGINEERING,**

**SATARA**

**TEACHER FEEDBACK ANALYSIS**

**ACADEMIC YEAR: 2017-18**

**TOTAL RESPONSES: 103**



103 responses

Link to Sheets

Accepting responses

Summary

Question

Individual

Name of the Teacher

103 responses

Ms. Mulla S. Y

Jadhav S S

Parve S S

Mrs. Sawant A. P

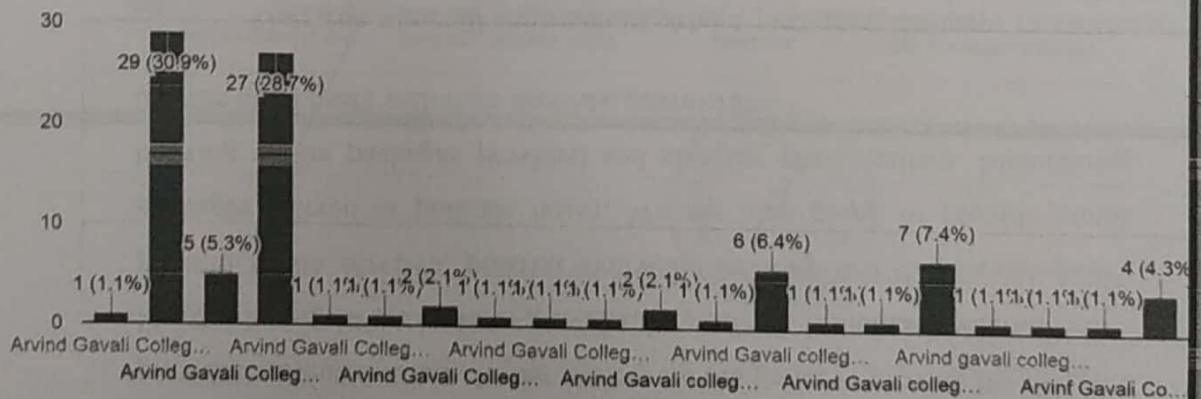
Ms. Mulla S.Y

Padwal P.V

Chavan S. V

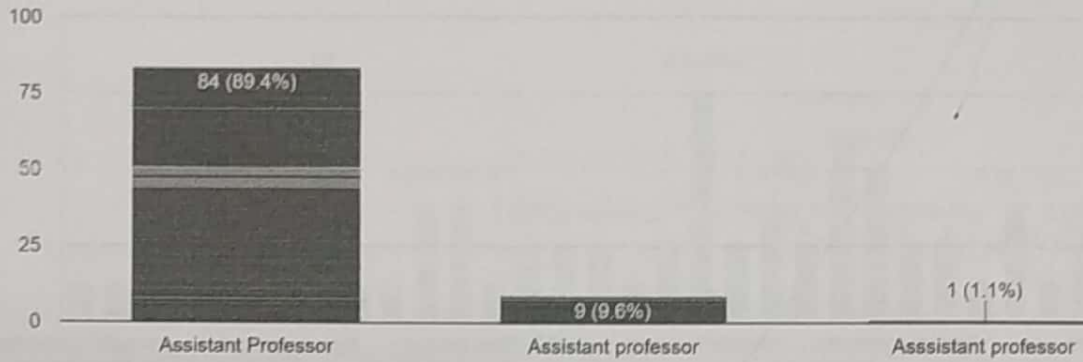
Name of the Organization

94 responses



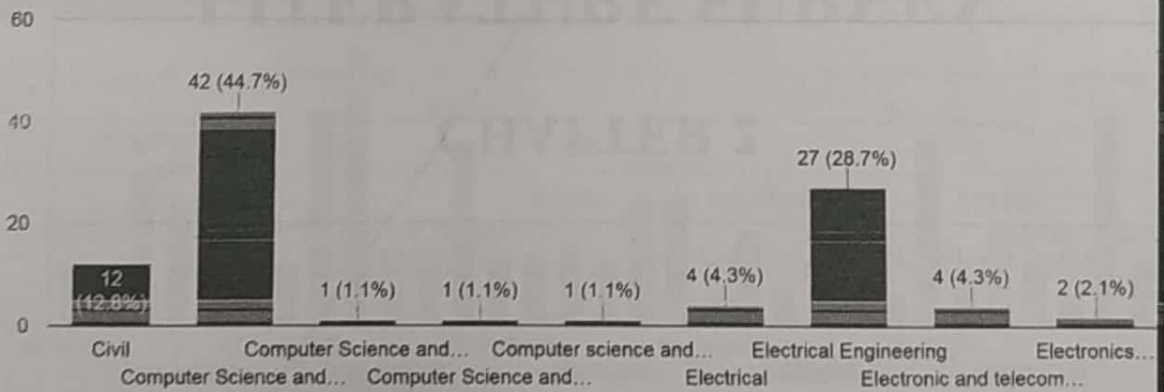
### Designation

94 responses



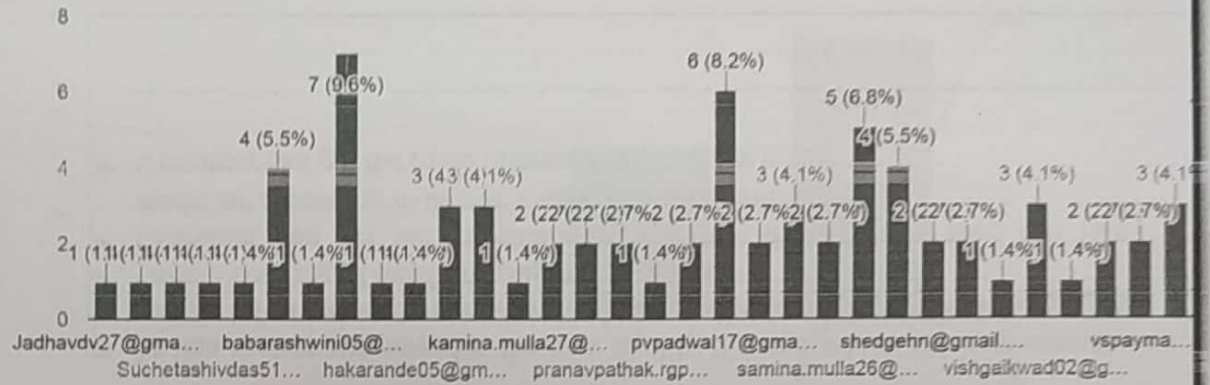
### Department

94 responses



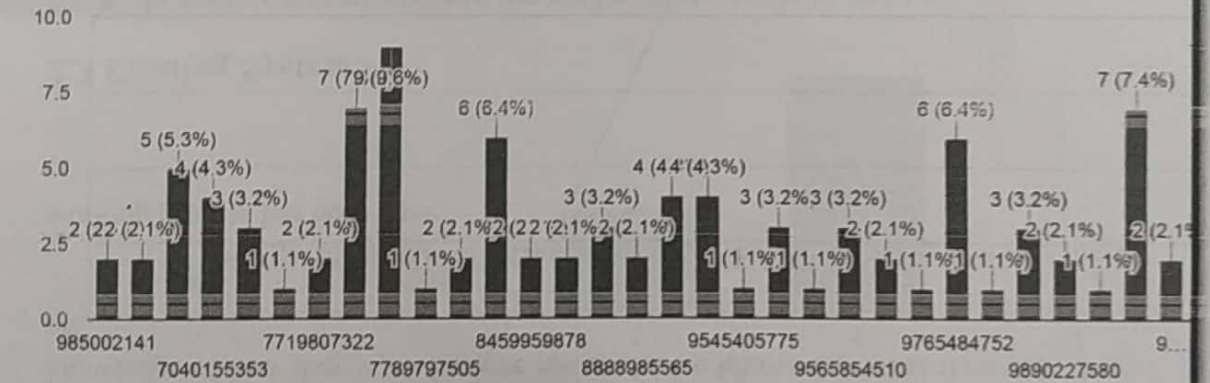
**Email ID.**

73 responses



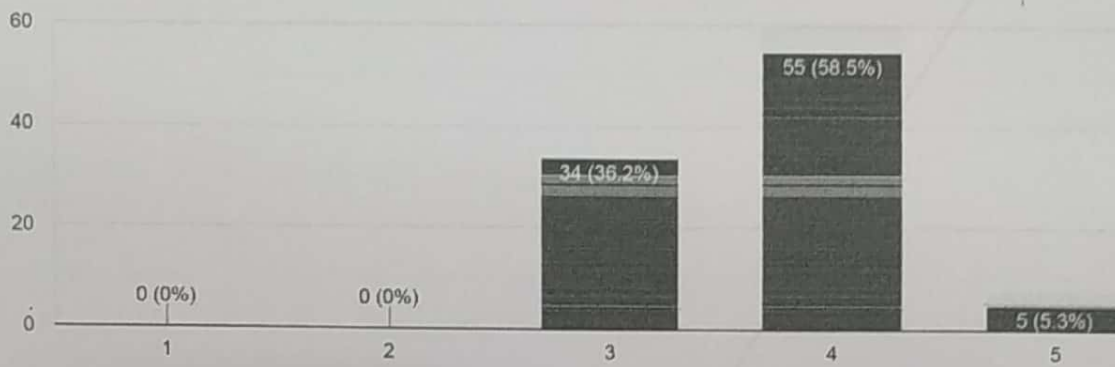
**Contact No**

94 responses



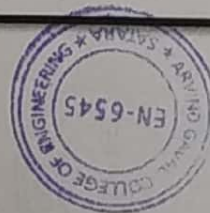
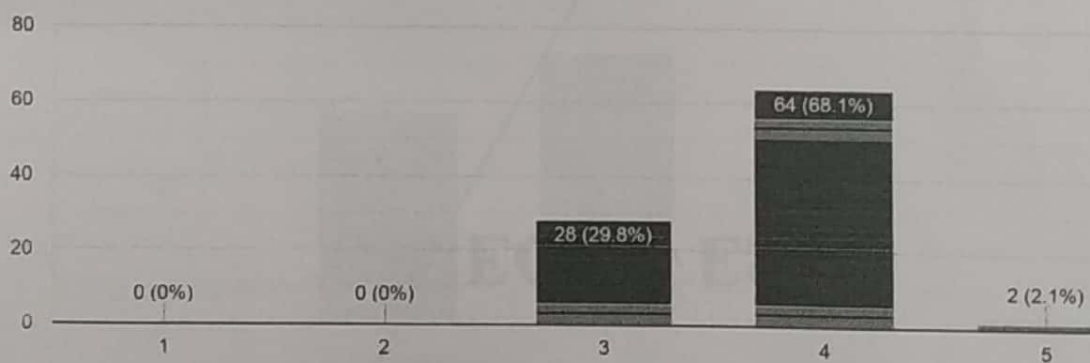
### 1. Relevance of learning objectives of the curriculum.

94 responses



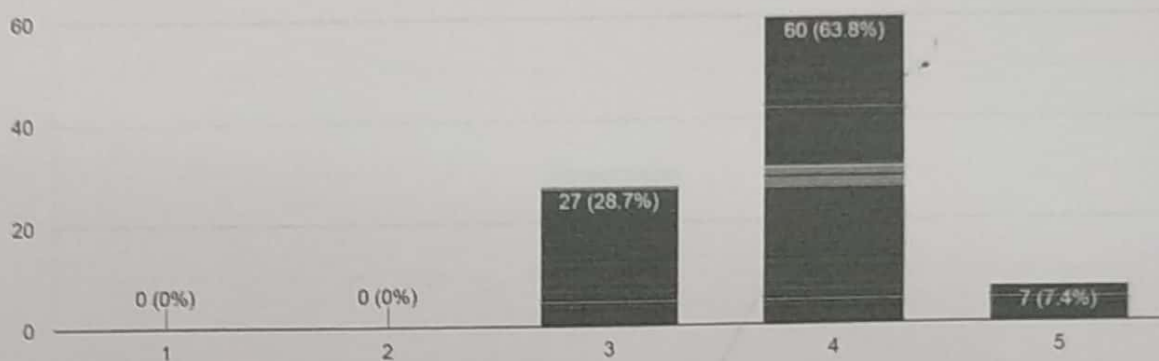
### 2. Depth of course content with respect to industrial requirement?

94 responses



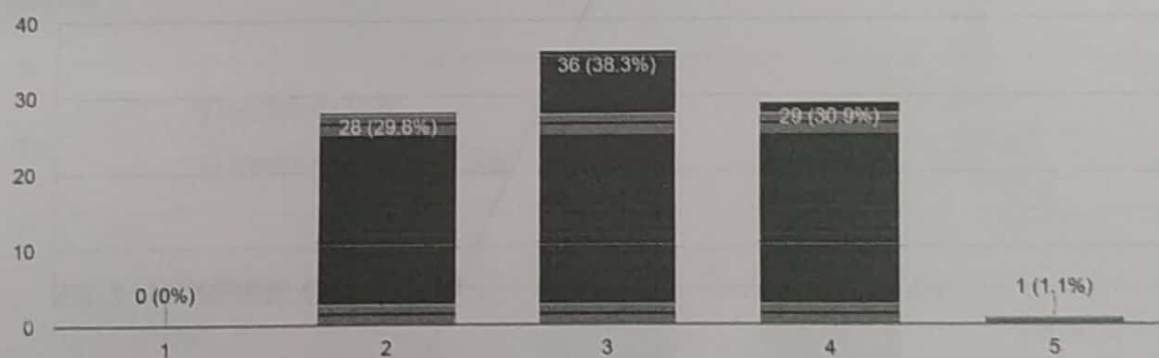
### 3. Curriculum weightage given to skill development/ entrepreneurship/ research.

94 responses



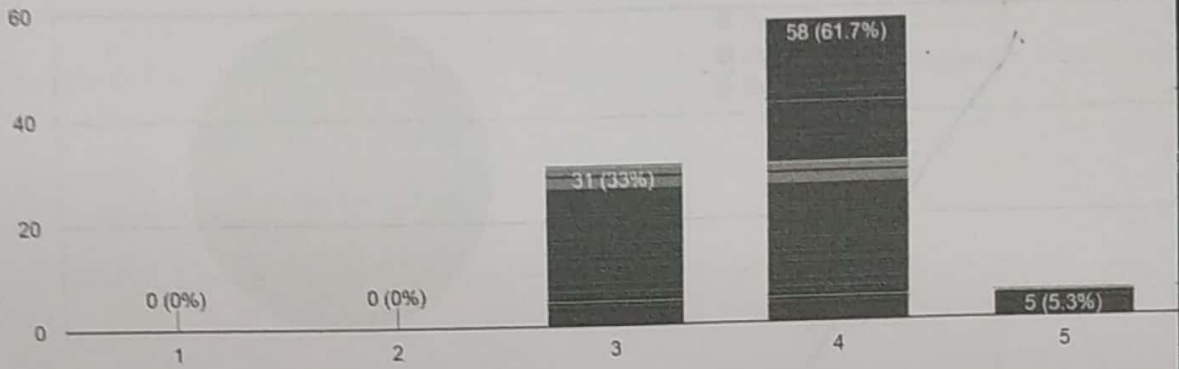
### 4. How will you rate the difficulty level of the course content.

94 responses



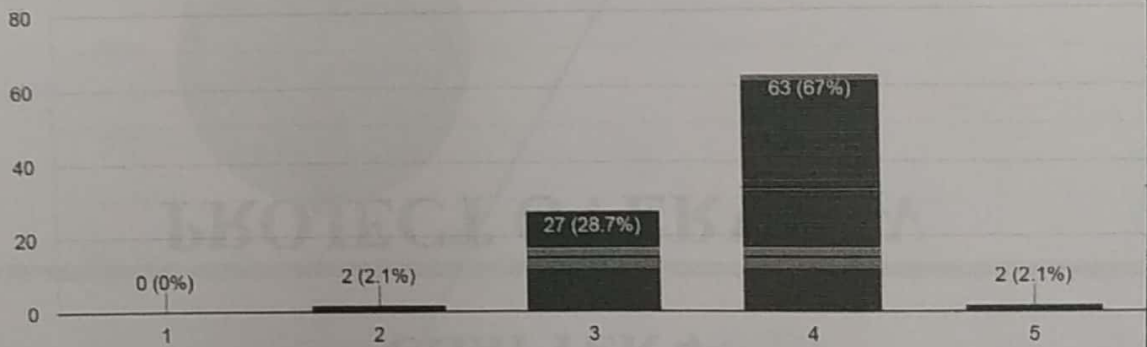
5. Relevance of the course to industry and societal needs.

94 responses



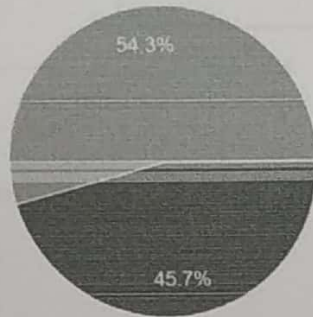
6. Proficiency level of student in pre-requisites.

94 responses



7. Response of the students during delivery of the session.

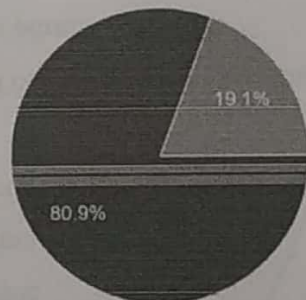
94 responses



- Poor
- Good
- Excellent

8. Communication of the students with the expert during the session.

94 responses



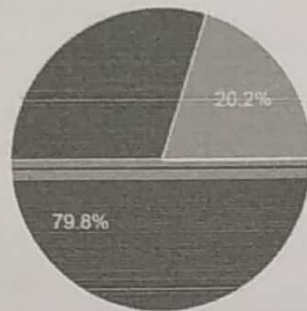
- Poor
- Good
- Excellent





9. Understanding level of technical knowledge / curriculum of the students.

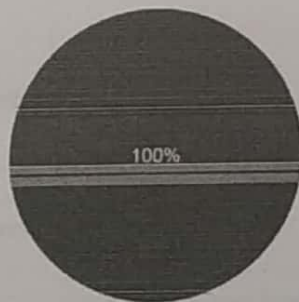
94 responses



- Poor
- Good
- Excellent

10. Are you satisfied with the quality of questions asked by the students.

94 responses



- Yes
- No

*Ashtakalge*



*VAH*

**Principal**  
Arvind Gavali College of Engineering  
Danmalewadi, Satara.

### OVERAL ANALYSIS:

| APPRECIATION   | SUGGESTIONS FOR IMPROVEMENT   |
|--|---|
| <ul style="list-style-type: none"><li>• Overall faculty satisfaction with student is good</li></ul>    | <ul style="list-style-type: none"><li>• .Student response during the delivery of session needs to improve.</li></ul>        |
| <ul style="list-style-type: none"><li>• Communication of student in expert session is good.</li></ul>  | <ul style="list-style-type: none"><li>• Proficiency level of student in prerequisite needs to improve.</li></ul>            |
| <ul style="list-style-type: none"><li>• Student's understanding of technical content is good</li></ul> | <ul style="list-style-type: none"><li>• Relevance of the course to industrial and societal needs need to improve.</li></ul> |

*Shadag*

*ARH*

Principal  
Arvind Gavali College of Engineering  
Panmalewadi, Satara.