

Department of Core Science & Engineering

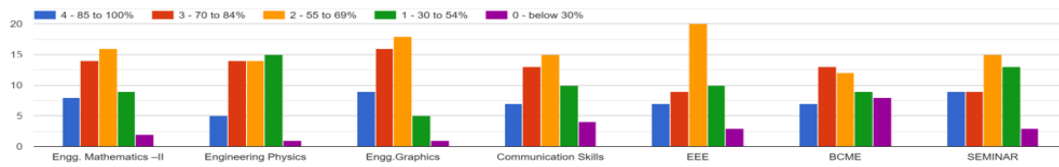
First Year Feedback

- **Division - B**
- **Month: May 22**
- **Total Responses : 49**
- **Total Class Strength : 74**
- **Feedback Percentage : 66.21 %**

FACULTY – SUBJECT DISTRIBUTION

Subject	Abr.	Name of Faculty	Abr.
Engineering Mathematics-I	EM I	Mrs. Kasture Ashwini	KA
Engineering Physics	EP	Ms.Jadhav Tejaswini	JT
Engineering Graphics	EG	Mr. Tambe Pratik	TP
Communication Skills	CS	Dr.Jadhav Nitin	JN
Energy and Environment Engineering	EEE	Mr.Shinde Suraj	SS
Basic Civil and Mechanical Engineering	BCME	Mr.Bamane P. R	BP
Seminar	SEM	Mr.Kale A.A.	CAA

1. How much of the syllabus was covered in the class:



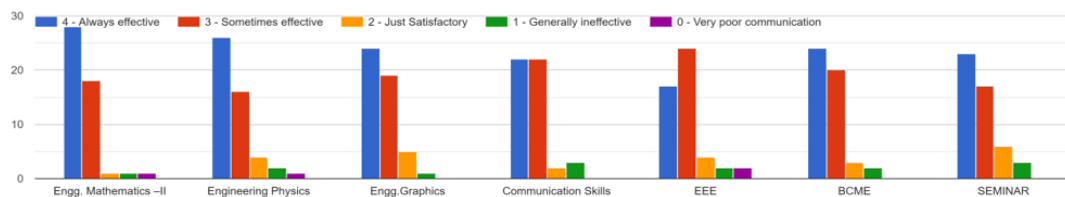
	EM I	Engg. Physics	Engg. Graphics	CS	EEE	BCME	SEM	%
85 - 100 %	8	5	9	7	7	7	9	15.16
70 - 84 %	14	14	16	13	9	13	9	25.65
55 - 69 %	16	14	18	15	20	12	15	32.07
30 - 54 %	9	15	5	10	10	9	13	20.70
0- Below 30 %	2	1	1	4	3	8	3	6.41

2. How well did the teachers prepare for the classes?



	EM I	Engg. Physics	Engg. Graphics	CS	EEE	BCME	SEM	%
Thoroughly	28	16	24	15	15	21	20	40.52
Satisfaction	16	27	19	23	25	22	22	44.90
Poorly	3	3	6	9	6	5	5	10.79
Indifferently	1	2	0	1	1	1	2	2.33
Wont Teach at all	1	1	0	1	2	0	0	1.48

3. How well were the teachers able to communicate



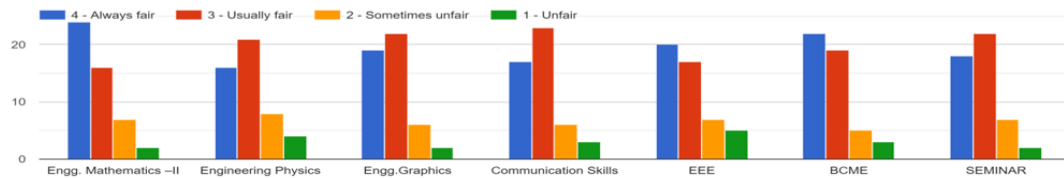
	EM I	Engg. Physics	Engg. Graphics	CS	EEE	BCME	SEM	%
Always Effective	28	26	17	24	23	24	23	48.10
Sometime effective	18	16	24	20	17	20	17	38.48
Just Satisfactory	1	4	4	3	6	3	6	7.87
Generally Ineffective	1	2	2	2	3	2	3	4.37
Very Poor Communication	1	1	2	0	0	0	0	1.17

4. The teachers's approach to teaching can best be described as



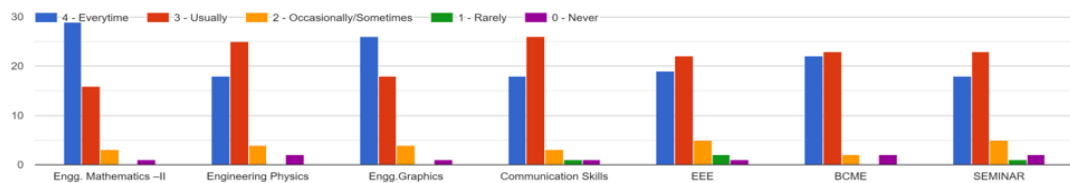
	EM I	Engg. Physics	Engg. Graphics	CS	EEE	BCME	SEM	%
Excellent	27	15	19	15	17	22	17	38.48
Very Good	13	20	19	18	14	13	16	32.94
Good	7	10	8	13	13	11	11	21.28
Fair	1	4	3	3	4	3	4	6.41
Poor	1	0	0	0	1	0	1	0.87

5. Fairness of the internal evaluation process by the teachers



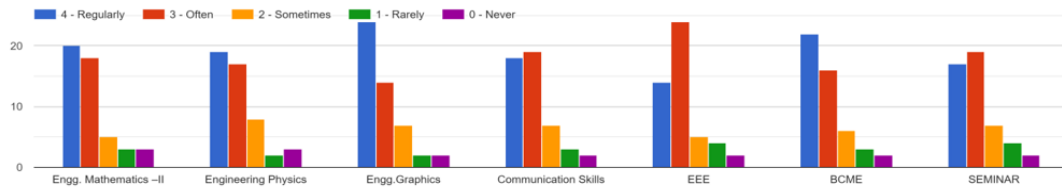
	EM I	Engg. Physics	Engg. Graphics	CS	EEE	BCME	SEM	%
Always fair	24	16	19	17	20	22	18	39.650
Usually fair	16	21	22	23	17	19	22	40.87
Sometimes unfair	7	8	6	6	7	5	7	13.41
unfair	2	4	2	3	5	3	2	6.12

6. Was your performance in assignments/extra practice test discussed with you?



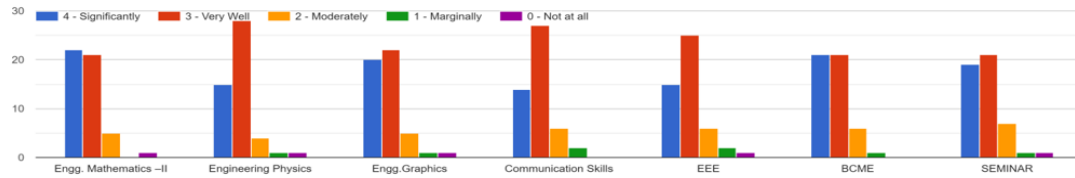
	EM I	Engg. Physics	Engg. Graphics	CS	EEE	BCME	SEM	%
Everytime	29	18	26	18	19	22	18	43.73
Usually	16	25	18	26	22	23	23	44.67
Sometimes	3	4	4	3	5	2	5	7.58
Rarely	0	0	0	1	2	0	1	1.17
Never	1	2	1	1	1	2	2	2.91

7. The faculty takes active interest in promoting internship, student exchange, field visit opportunities for students. *



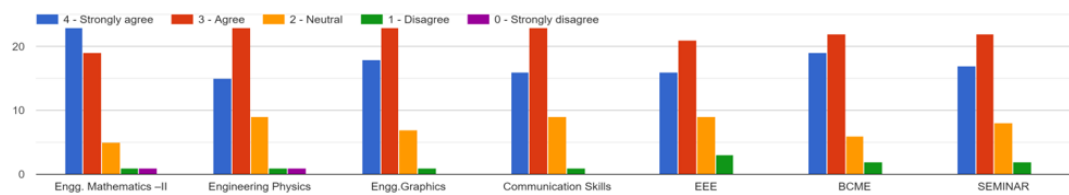
	EM I	Engg. Physics	Engg. Graphics	CS	EEE	BCME	SEM	%
Regularly	20	19	24	18	14	22	17	39.06
Often	18	17	14	19	24	16	19	37.03
Sometimes	5	8	7	7	5	6	7	13.12
Rarely	3	2	2	3	4	3	4	6.12
Never	3	3	2	2	2	2	2	4.66

8. The teaching and mentoring process in your institution facilitates you in cognitive, social and emotional growth.



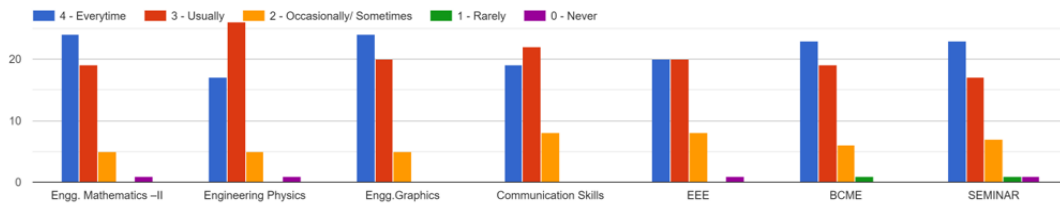
	EM I	Engg. Physics	Engg. Graphics	CS	EEE	BCME	SEM	%
Significantly	22	15	20	14	15	22	19	37.07
Very Well	21	28	22	27	25	22	21	48.40
Moderately	5	4	5	6	6	6	7	11.37
Marginally	0	1	1	2	2	1	1	2.33
Not at All	1	1	1	0	1	0	1	1.46

9. The institute provides multiple opportunities to learn and grow



	EM I	Engg. Physics	Engg. Graphics	CS	EEE	BCME	SEM	%
Strongly Agree	23	15	18	16	16	19	17	36.15
Agree	19	23	23	23	21	22	22	44.60
Neutral	5	9	7	9	9	6	8	15.45
Disagree	1	1	1	1	3	2	2	3.27
Strongly Disagree	1	1	0	0	0	0	0	0.58

10. Teachers inform you about your expected competencies, course outcomes, and program outcomes



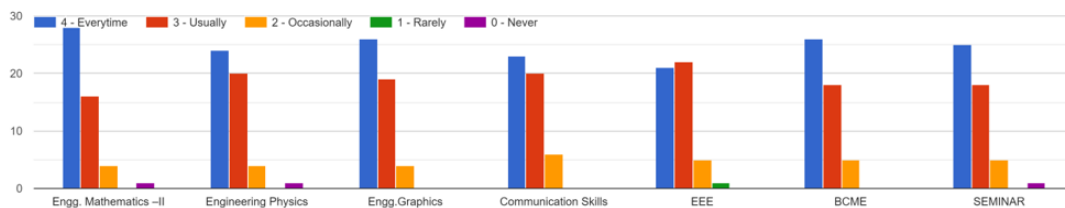
	EM I	Engg. Physics	Engg. Graphics	CS	EEE	BCME	SEM	%
Every time	24	17	24	19	20	23	23	43.73
Usually	19	26	20	22	20	19	17	41.69
Occasionally	5	5	5	8	8	6	7	12.83
Rarely	0	0	0	0	0	1	1	0.58
Never	1	1	0	0	1	0	1	1.17

11. Your mentor does a necessary follow-up with as assigned task to you



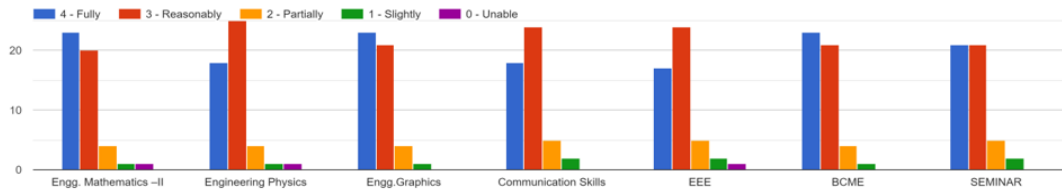
	EM I	Engg. Physics	Engg. Graphics	CS	EEE	BCME	SEM	%
Every time	24	17	23	19	15	21	20	40.52
Usually	20	27	22	24	28	22	22	48.10
Occasionally	3	3	3	5	4	4	5	7.87
Rarely	0	0	0	0	1	1	0	0.58
I don't have mentor	2	2	1	1	1	1	2	2.91

12. The teacher illustrates the concepts through examples and applications



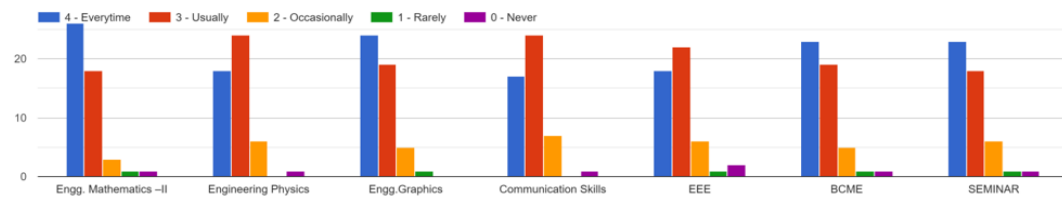
	EM I	Engg. Physics	Engg. Graphics	CS	EEE	BCME	SEM	%
Every time	28	24	26	23	21	26	25	50.44
Usually	16	20	19	20	22	18	18	38.77
Occasionally	4	4	4	6	5	5	5	9.62
Rarely	0	0	0	0	1	0	0	0.30
Never	1	1	0	0	0	0	1	0.87

13. The teacher identifies your strengths and encourage you with providing right level of challenges



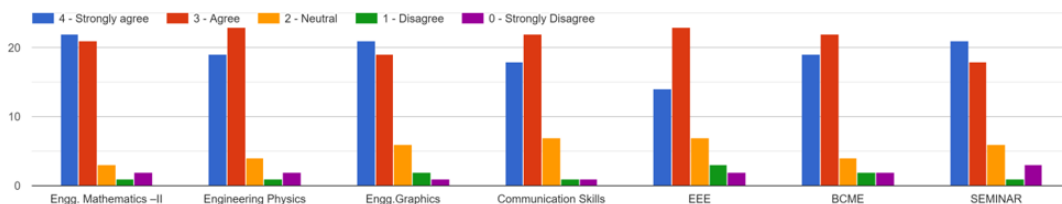
	EM I	Engg. Physics	Engg. Graphics	CS	EEE	BCME	SEM	%
Fully	23	18	23	18	17	23	21	41.69
Reasonably	20	25	21	24	24	21	21	45.48
Partially	4	4	4	5	5	4	5	9.04
Slightly	1	1	1	2	2	1	2	2.91
Unable	1	1	0	0	1	0	0	0.87

14. Teachers are able to identify your weaknesses and help you to overcome them



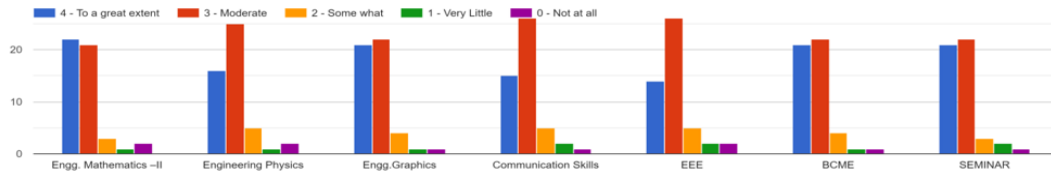
	EM I	Engg. Physics	Engg. Graphics	CS	EEE	BCME	SEM	%
Every time	23	18	24	17	18	23	23	42.56
Usually	18	24	19	24	22	19	18	41.98
Occasionally	3	6	5	7	6	5	6	11.09
Rarely	1	0	1	0	1	1	1	1.46
Never	1	1	0	0	1	0	0	0.87

15. The institution makes effort to engage students in the monitoring, review and continuous quality improvement of the teaching learning process.



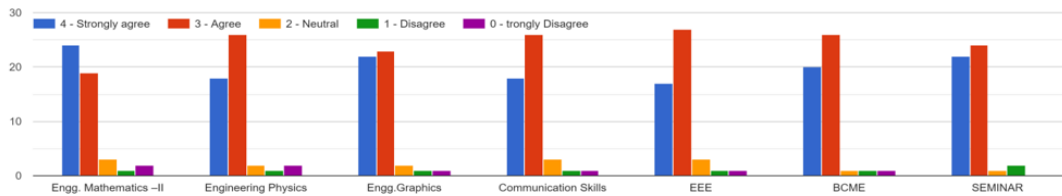
	EM I	Engg. Physics	Engg. Graphics	CS	EEE	BCME	SEM	%
Strongly Agree	22	19	21	18	14	19	21	39.06
Agree	21	23	19	22	23	22	18	43.15
Neutral	3	4	6	7	7	4	6	10.78
Disagree	1	1	2	1	3	2	1	3.21
Strongly Disagree	2	2	1	1	2	2	3	3.79

16. The institute/ teachers use student-centric methods, such as experiential learning, participative learning and problem-solving methodologies for enhancing learning experiences



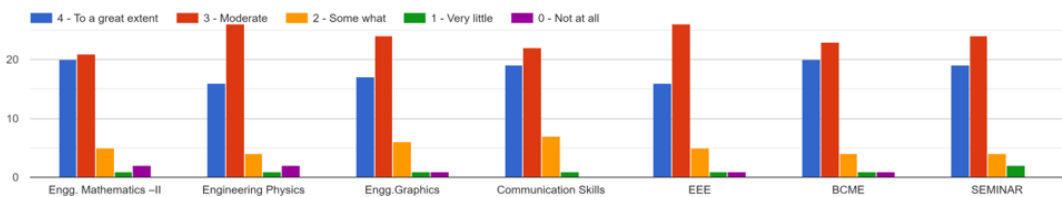
	EM I	Engg. Physics	Engg. Graphics	CS	EEE	BCME	SEM	%
To a great extent	22	16	21	15	14	21	21	37.90
Moderate	21	25	22	26	26	22	22	47.81
Some What	3	5	4	5	5	4	3	8.45
Very Little	1	1	1	2	2	1	2	2.91
Not at all	2	2	1	1	2	1	1	2.91

17. Teachers encourage you to participate in extracurricular activities.



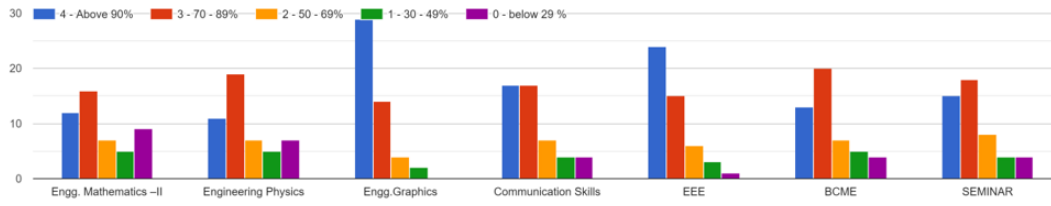
	EM I	Engg. Physics	Engg. Graphics	CS	EEE	BCME	SEM	%
Strongly Agree	24	18	22	18	17	20	22	41.10
Agree	19	26	23	26	27	26	24	49.85
Neutral	3	2	2	3	3	1	1	4.37
Disagree	1	1	1	1	1	1	2	2.33
Strongly Disagree	2	3	1	1	1	1	0	2.62

18. Efforts are made by teachers to inculcate soft skills, life skills and employability skills to make you ready for the world of work



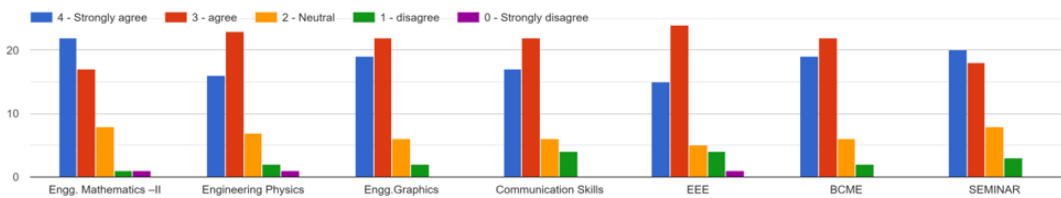
	EM I	Engg. Physics	Engg. Graphics	CS	EEE	BCME	SEM	%
To a great extent	20	16	17	19	16	20	19	37.02
Moderate	21	26	24	22	26	23	24	48.39
Some What	5	4	6	7	5	4	4	10.20
Very Little	1	1	1	1	1	1	2	2.33
Not at all	2	2	1	0	1	1	0	2.04

19. What percentage of teachers use ICT tools such as LCD projector, Multimedia , etc while teaching



	EM I	Engg. Physics	Engg. Graphics	CS	EEE	BCME	SEM	%
Above 90%	12	11	29	17	24	13	15	35.27
70-89%	16	19	14	17	15	20	18	34.69
50-69 %	7	7	4	7	6	7	8	13.41
30-49 %	5	5	2	4	3	5	4	8.16
0-below 29%	9	7	0	4	1	4	4	8.45

20. The overall quality of teaching-learning process in your institute is very good



	EM I	Engg. Physics	Engg. Graphics	CS	EEE	BCME	SEM	%
Strongly Agree	22	16	19	17	15	19	20	37.32
Agree	17	23	22	22	24	22	18	43.15
Neutral	8	7	6	6	5	6	8	13.41
Disagree	1	2	2	4	4	2	3	5.25
Strongly Disagree	1	1	0	0	1	0	0	0.87

OVERALL FEEDBACK ANALYSIS

Sub.	Abr.	Appreciation	Suggestions for Improvement
EMI	KA	1. Encourage to participate in extracurricular activities. 2. Provides multiple opportunities to learn and grow.	1. Syllabus coverage is less. <i>P.R. Basule</i>
EC	NK	1. Identifies strengths and encourage with right level of challenges.	1. Internal evaluation process needs to improve. <i>Beta</i> 2. Less use of ICT tool.
EM	BP	1. Identify weaknesses and help to overcome it. 2. Teaching approach is excellent. <i>Beta</i>	
CPC	PP	1. Internal Evaluation process is fair. 2. Assignments extra practice test are discussed. <i>Beta</i>	
BEEE	HV	1. Illustrate Concepts through examples and practical's.	1. Take extra practice tests and assignments. <i>Beta</i>
SEM	KA	1. Overall quality of teaching-learning process is very good. 2. Encourage to participate in extracurricular activities.	1. Inform expected competencies, course outcomes and program outcomes. <i>alpha</i>

ACTION TAKEN PLAN BY FACULTY

Sub.	Abr.	Action plan for improvement	Remark By HOD/AMC
EMI	KA	I will take more lecture.	
EC	NK	In July month according to syllabus requirements ICT Panel will be used. ii) If I will improve the internal evaluation process.	
EM	BP	-	
CPC	PP	-	
BEEE	HV	I will try to take extra practice.	
SEM	KA	By implement the suggestion & make the students aware of the POs & COs. <i>alpha</i>	

alpha
AMC

Beta
Head Of Academics

Beta
Head Administrator

