

Department of Core Science & Engineering

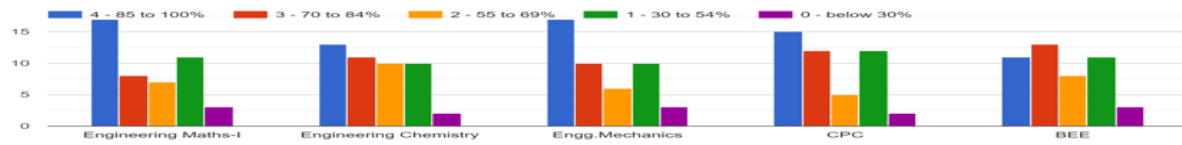
First Year Feedback

- **Division - B**
- **Month: Dec 21 - Jan 22**
- **Total Responses : 46**
- **Total Class Strength : 76**
- **Feedback Percentage : 60.52%**

FACULTY – SUBJECT DISTRIBUTION

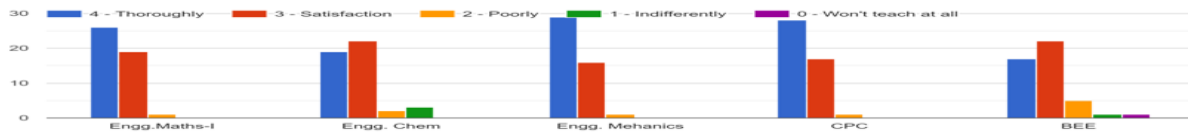
Subject	Abr.	Name of Faculty	Abr.
Engineering Mathematics-I	EM I	Mrs. Kasture Ashwini	KA
Engineering Chemistry	EC	Mrs. Pawar Snehal	PS
Engineering Mechanics	EM	Mr. <u>Bamane</u> Prashant	BP
Computer Programming in C	CPC	Mr. Pathak Pranav	PP
Basic Electrical & Electronic Engineering	BEEE	Mr. <u>Hingmire</u> Vishal	HV

1. How much of the syllabus was covered in the class:



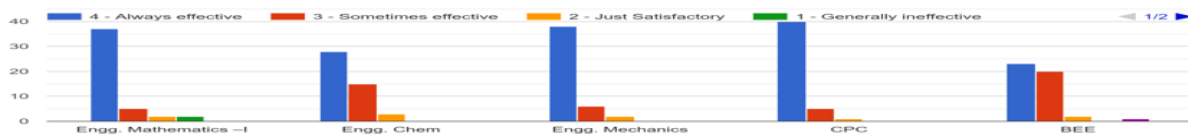
	EM I	Engg. Chemistry	Engg. Mechanics	CPC	BEE	%
85 -100 %	17	13	17	15	11	31.73
70 - 84 %	8	11	10	12	13	23.47
55 – 69 %	7	10	6	5	8	15.65
30 – 54 %	11	10	10	12	11	23.47
0- Below 30 %	3	2	3	2	3	5.6

2. How well did the teachers prepare for the classes?



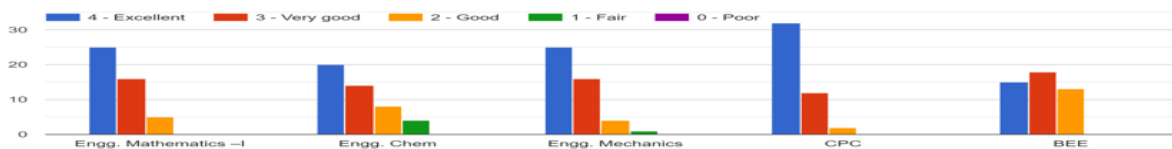
	EM I	Engg. Chemistry	Engg. Mechanics	CPC	BEE	%
85 -100 %	26	19	29	28	17	51.73
70 - 84 %	19	22	16	17	22	41.73
55 – 69 %	1	2	1	1	15	8.6
30 – 54 %	0	3	0	0	1	1.7
0- Below 30 %	0	0	0	0	1	0.4

3. How well were the teachers able to communicate



	EM I	Engg. Chemistry	Engg. Mechanics	CPC	BEE	%
Always Effective	37	28	38	40	23	72.17
Sometime effective	5	15	6	5	20	22.17
Just Satisfactory	2	3	2	1	2	4.3
Generally Ineffective	2	0	0	0	0	0.8
Very Poor Communication	0	0	0	0	1	0.4

4. The teachers's approach to teaching can best be described as



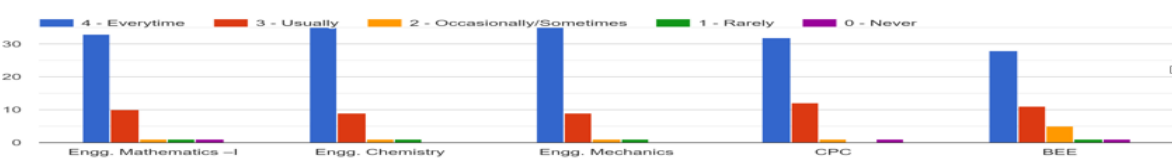
	EM I	Engg. Chemistry	Engg. Mechanics	CPC	BEE	%
Excellent	25	20	25	32	15	46.52
Very Good	16	14	16	12	18	22.17
Good	5	8	4	2	13	13.91
Fair	0	4	1	0	0	2.1
Poor	0	0	0	0	0	0

5. Fairness of the internal evaluation process by the teachers



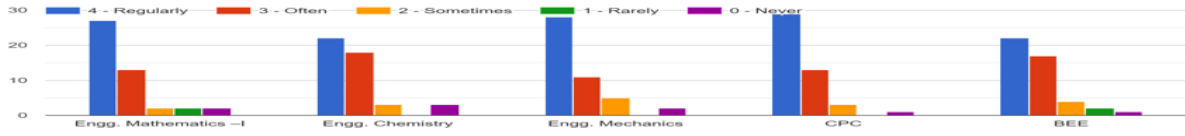
	EM I	Engg. Chemistry	Engg. Mechanics	CPC	BEE	%
Regularly	33	27	30	34	26	65.21
Often	8	26	13	10	16	31.73
Sometimes	5	3	3	2	3	6.9
Rarely	0	0	0	0	1	0.4
Never	0	0	0	0	0	0

6. Was your performance in assignments/extra practice test discussed with you?



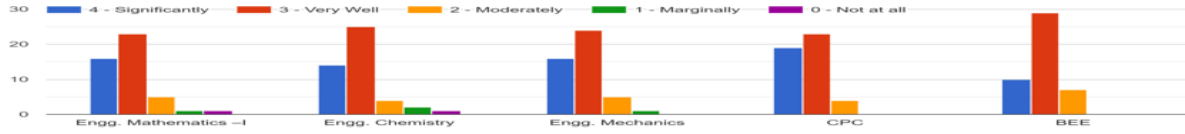
	EM I	Engg. Chemistry	Engg. Mechanics	CPC	BEE	%
Regularly	33	35	35	32	28	70.86
Often	10	9	9	12	11	22.17
Sometimes	1	1	1	1	5	3.9
Rarely	1	1	1	0	1	1.7
Never	1	0	0	1	1	1.3

7. The faculty takes active interest in promoting internship, student exchange, field visit opportunities for students. *



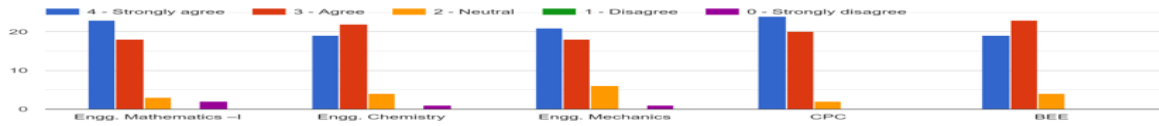
	EM I	Engg. Chemistry	Engg. Mechanics	CPC	BEE	%
Regularly	27	22	28	29	22	55.65
Often	13	18	11	13	17	31.30
Sometimes	2	3	5	3	4	7.3
Rarely	2	0	0	0	2	1.7
Never	2	3	2	1	1	3.9

8. The teaching and mentoring process in your institution facilitates you in cognitive, social and emotional growth.



	EM I	Engg. Chemistry	Engg. Mechanics	CPC	BEE	%
Significantly	16	14	16	19	10	32.2
Very Well	23	25	24	23	29	53.90
Moderately	5	4	5	4	7	10.86
Marginally	1	2	1	0	0	1.7
Not at All	1	1	0	0	0	0.8

9. The institute provides multiple opportunities to learn and grow



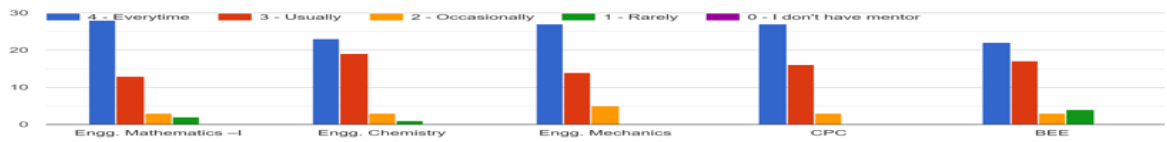
	EM I	Engg. Chemistry	Engg. Mechanics	CPC	BEE	%
Strongly Agree	23	19	21	24	19	50.43
Agree	18	22	18	20	23	43.93
Neutral	3	4	6	2	4	8.2
Disagree	0	0	0	0	0	0
Strongly Disagree	2	1	1	0	0	1.7

10. Teachers inform you about your expected competencies, course outcomes, and program outcomes



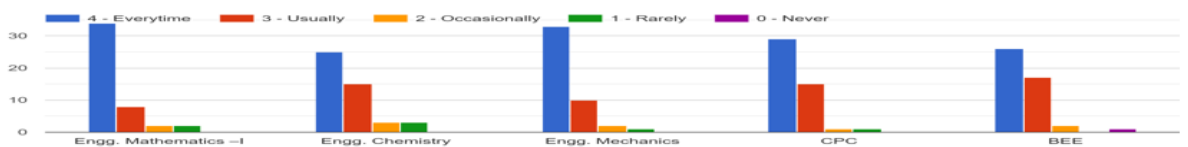
	EM I	Engg. Chemistry	Engg. Mechanics	CPC	BEE	%
Every time	32	30	33	32	24	65.65
Usually	10	15	11	14	18	29.56
Occasionally	3	0	0	0	2	2.17
Rarely	0	0	2	0	1	1.2
Never	1	1	0	0	0	0.8

11. Your mentor does a necessary follow-up with as assigned task to you



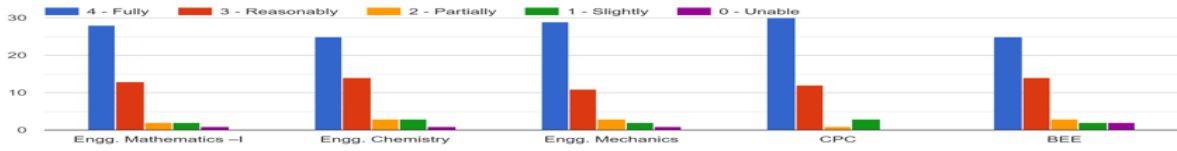
	EM I	Engg. Chemistry	Engg. Mechanics	CPC	BEE	%
Every time	28	23	27	27	22	55.21
Usually	13	19	14	16	17	34.34
Occasionally	3	3	5	3	3	7.3
Rarely	2	1	0	0	4	3.0
I don't have mentor	0	0	0	0	0	0

12. The teacher illustrates the concepts through examples and applications



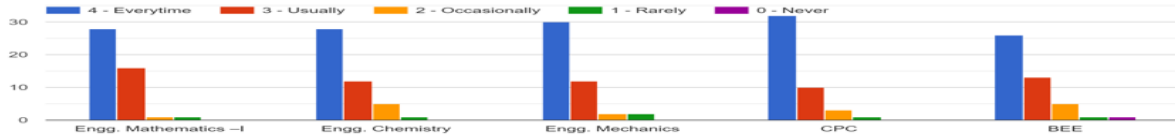
	EM I	Engg. Chemistry	Engg. Mechanics	CPC	BEE	%
Every time	34	25	29	29	26	62.17
Usually	8	14	11	15	17	28.26
Occasionally	2	3	3	1	2	4.7
Rarely	2	3	2	1	0	3.4
Never	0	1	1	0	1	1.2

13. The teacher identifies your strengths and encourage you with providing right level of challenges



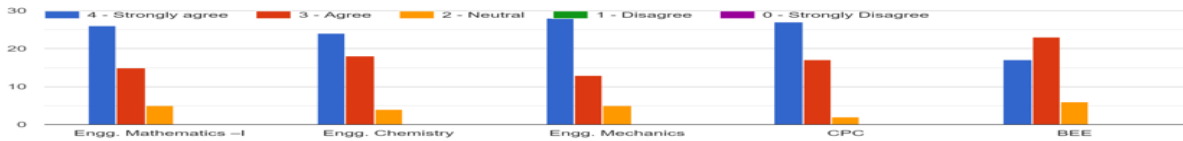
	EM I	Engg. Chemistry	Engg. Mechanics	CPC	BEE	%
Fully	28	25	29	30	25	59.56
Reasonably	13	14	11	12	14	27.82
Partially	2	3	3	2	3	5.6
Slightly	2	3	2	1	2	4.3
Unable	1	1	1	3	2	3.4

14. Teachers are able to identify your weaknesses and help you to overcome them



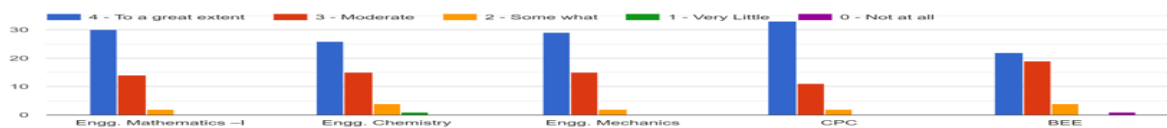
	EM I	Engg. Chemistry	Engg. Mechanics	CPC	BEE	%
Every time	28	28	30	32	26	62.60
Usually	16	12	12	10	13	27.39
Occasionally	1	5	2	3	5	6.9
Rarely	1	1	1	1	1	2.1
Never	0	0	0	0	1	0

15. The institution makes effort to engage students in the monitoring, review and continuous quality improvement of the teaching learning process.



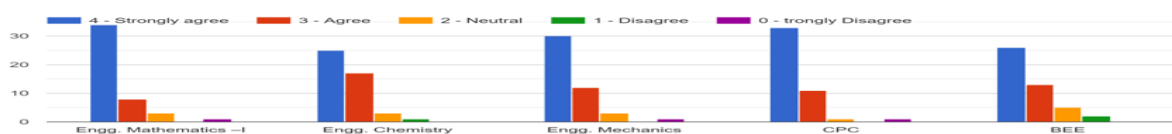
	EM I	Engg. Chemistry	Engg. Mechanics	CPC	BEE	%
Every time	26	24	28	27	17	53.04
Usually	15	18	13	17	23	34.39
Occasionally	5	4	5	2	6	9.5
Rarely	0	0	0	0	0	0
Never	0	0	0	0	0	0

16. The institute/ teachers use student-centric methods, such as experiential learning, participative learning and problem-solving methodologies for enhancing learning experiences



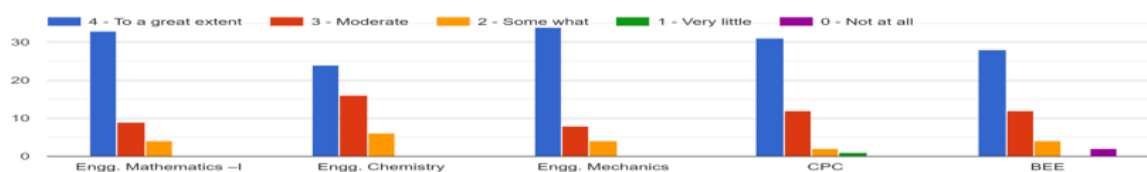
	EM I	Engg. Chemistry	Engg. Mechanics	CPC	BEE	%
To a great extent	30	26	29	33	22	60.86
Moderate	14	15	15	11	19	32.17
Some What	2	4	2	2	4	6.0
Very Little	0	1	0	0	0	0.4
Not at all	0	0	0	0	1	0.4

17. Teachers encourage you to participate in extracurricular activities.



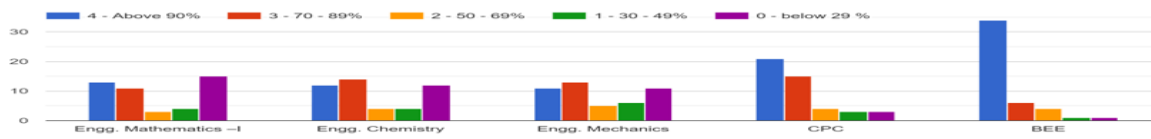
	EM I	Engg. Chemistry	Engg. Mechanics	CPC	BEE	%
Strongly Agree	34	25	30	33	26	64.34
Agree	8	17	12	11	12	26.08
Neutral	3	3	3	1	5	6.5
Disagree	0	1	1	1	1	2.1
Strongly Disagree	1	0	0	1	0	0.8

18. Efforts are made by teachers to inculcate soft skills, life skills and employability skills to make you ready for the world of work



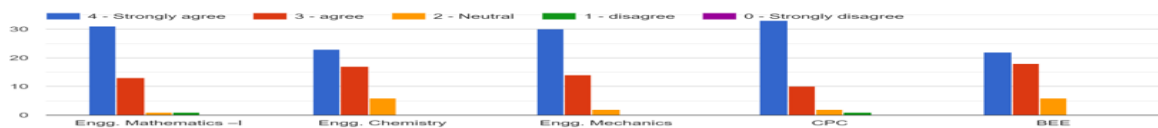
	EM I	Engg. Chemistry	Engg. Mechanics	CPC	BEE	%
To a great extent	33	24	34	31	28	65.21
Moderate	9	16	8	12	12	24.78
Some What	4	6	4	2	4	8.69
Very Little	0	0	0	1	2	2.1
Not at all	0	0	0	0	0	0

19. What percentage of teachers use ICT tools such as LCD projector, Multimedia , etc while teaching



	EM I	Engg. Chemistry	Engg. Mechanics	CPC	BEE	%
Above 90%	13	12	11	21	34	39.56
70-89%	11	14	13	15	6	25.65
50-69%	3	4	5	4	4	8.6
30-49%	4	4	6	3	1	7.8
0-below 29%	15	12	11	3	1	18.26

20. The overall quality of teaching-learning process in your institute is very good



	EM I	Engg. Chemistry	Engg. Mechanics	CPC	BEE	%
Strongly Agree	31	23	30	33	22	60.43
Agree	13	17	14	10	18	31.30
Neutral	1	6	2	2	6	7.3
Disagree	1	0	0	1	0	0.8
Strongly Disagree	0	0	0	0	0	0

21. Give 3 observations/ suggestions to improve the overall teaching-learning experience of respective teachers.

1. Teaching of all Faculty is Good.
2. Learning experience of sub Cpic, E-M1, E-Chemistry &E-Mis excellent
3. There is overuse of multimedia for BEEE.
4. Start German Language course.
5. Start Ncc as soon as Possible
6. Try to each every student and ask for their doubts.

OVERALL FEEDBACK ANALYSIS

Sub.	Abr.	Appreciation	Suggestions for improvement
EM I	KA	<ol style="list-style-type: none"> 1. Properly internal evaluation process 2. Identify strength & encourage right level of challenges 	<ol style="list-style-type: none"> 1. Syllabus coverage is less.
EC	PS	<ol style="list-style-type: none"> 1. Identify weakness of students and help them to improve. 2. Discussion of assignment/Extra Practice test 	<ol style="list-style-type: none"> 1. Encouragement for participation in extracurricular activities.
EM	BP	<ol style="list-style-type: none"> 1. Teacher preparation in class is good. 2. Illustrates concept through examples. 	<ol style="list-style-type: none"> 1. Uses of ICT tools
CPC	PP	<ol style="list-style-type: none"> 1. Encouragement for participation in extracurricular activities 2. Quality of teaching learning process is very good 	<ol style="list-style-type: none"> 1. Uses of ICT tools
BEEE	HV	<ol style="list-style-type: none"> 1. Illustrate Concepts through examples and practical's 	<ol style="list-style-type: none"> 1. Syllabus coverage is less. 2. Reduce uses of ICT panel.

ACTION TAKEN PLAN BY FACULTY

Sub.	Abr.	Action plan for improvement	Remark By HOD/AMC
EM I	KA	Will plan lesson plan such that syllabus will cover.	Plan is such away that students understand the topic - the syllabus is also covered
EC	PS	I will encourage all students to participate in extracurricular activities.	That is very important besides academics
EM	BP	will use ICT tools	Every faculty member must be encouraged to use ICT tools
CPC	PP	Planning to conduct lectures on using ICT tools.	at least once a week while teaching.
BEEE	HV	1) will use blackboard 2) will take extra lecture	Its really good as the students will be able to learn & understand more clearly

[Signature]
AMC

(Ms. Kuthe P. Y.)

[Signature]
Head of Academics

(Mr. Pathak P. A.)

[Signature]
Head of Administration

(Mrs. Kasture A. D.)

[Signature]
Principal
(Dr. Vilas Pharande)



